

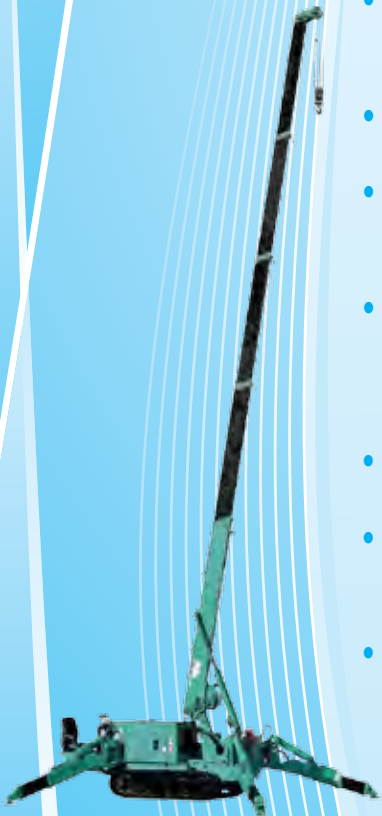


MC305-2

MINI CRAWLER CRANE

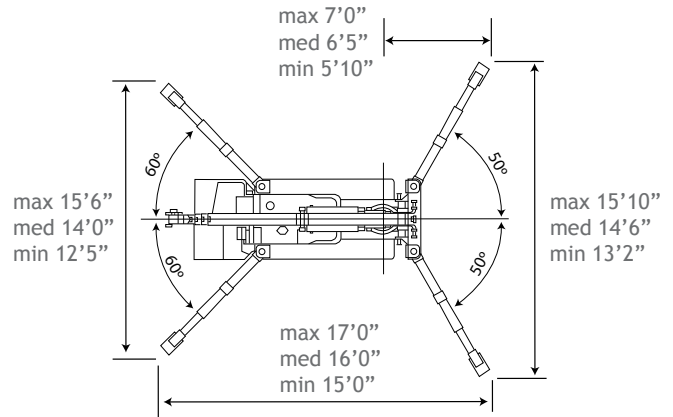
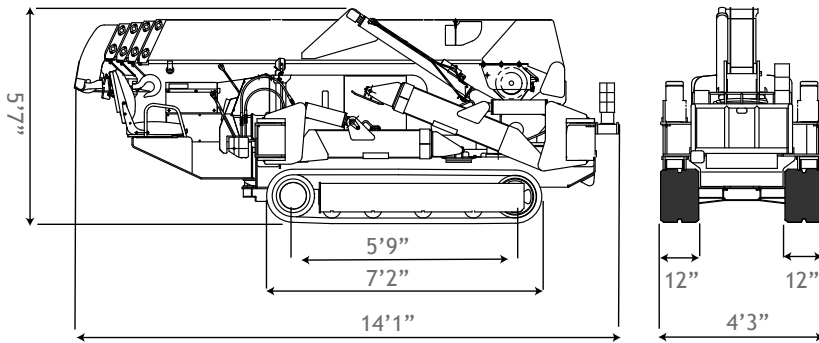
- 5 SECTION FULLY AUTOMATIC BOOM
- CONFINED AREA 3 POSITION OUTRIGGER SYSTEM
- RUBBER TRACKS
- 2 SPEED TRAVEL & CRANE FUNCTIONS
- 2 SPEED WINCH WITH HYDRAULIC DISC BRAKE
- PROGRAMMABLE CAPACITY MOMENT LIMITER

- ANTI TWO BLOCK, TILT SENSOR ALARM
- 360° SWING
- AUTOMATIC HOOK STOWAGE
- OPERATOR'S SEAT WITH CENTRALIZED CONTROLS
- REMOTE CONTROL
- 1/2/4 PARTS REEVING CAPACITY
- EPA COMPLIANT DIESEL ENGINE, DUAL POWER ELECTRIC MOTOR (optional)



Crane Model		MC305CRM(E)-2
Maximum Capacity		6,560 lb.
Maximum Working Radius		39.8'
Maximum Lifting Height		41'
Hook Speed		44' / min 4 Part / 4th Layer
Single Line Speed		177' / min 4th Layer
Hoist Rope		IWRC 6 x WS(26) 8mm x 240'
Boom System	Type	Automatic 5 Section, Pentagonal Telescopic
	Length	12'1" - 41'0"
	Telescopic Stroke / Speed	29' / 38 sec. [26 sec.]
Outriggers		3 Position, Lower and Extend by Direct Acting Hydraulic Cylinders, Manual Swing-out and Pin.
Boom Hoist	Angle / Speed	0° - 80° / 21 secs [14.5 sec.]
Swing	Radius / Speed	360° / 1.7 RPM [2.4 RPM]
Travel Crawler System	Drive	Hydraulic Motor, Stepless Speed Changer
	Travel Speed	0 - 1.7 mph
	Gradability	23° Design Limit 15° Set Limit
	Ground Contact	5'9" Length, 12" Wide
	Ground Pressure	5.40 PSI Diesel Model 5.59 PSI Electric Dual Power Model
Engine	Type	Yanmar 3TNV76-NMB 4 Cycle, 3 Cylinder, Diesel, Water Cooled
	Rated Output	20.38 hp, 15.3kw, 20.7 ps / 2500 RPM
	Fuel Tank	10.5 Gallon
Electric Motor (Dual Power)	Type	Totally Enclosed Fan Cooled Motor
	Size	5.5 kw, 4P, 230V, 3 phase, Inverter 30 hz - 60 hz
Remote Control	Standard	Cable Remote Control, Crane & Outrigger Operation, Graduated Micro Speed, Load & Rated Load LCD Display
Dimensions	Stowed LxWxH	L 14'1" x W 4'3" x H 5'7"
Net Weight		Diesel Model 8,800 lb.
		Electric Dual Power +300 lb.
Optional Equipment		Dual Power Electric Motor, White Rubber Tracks, Auxiliary Searcher Hook, Single Part Ball/Hook

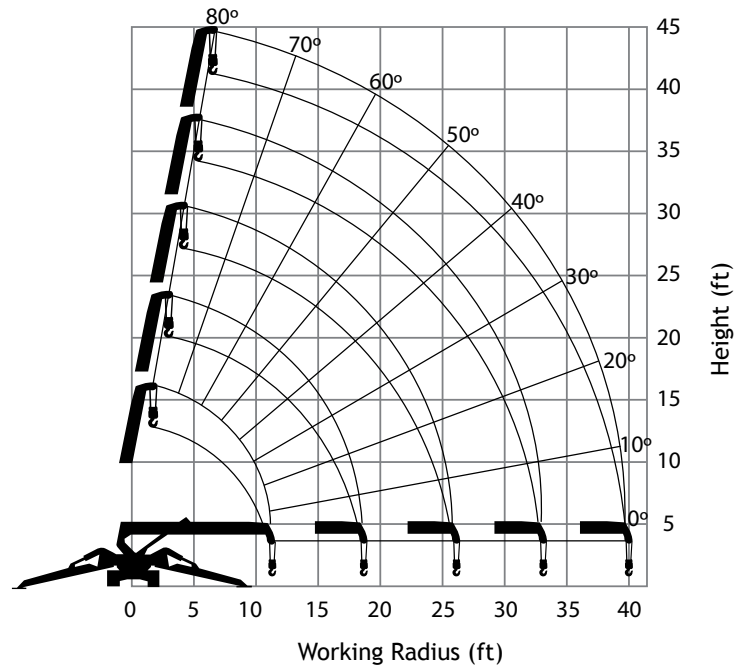
[] = high speed



RATED TOTAL LOAD - MAXIMUM Outriggers, 4 Part Line

Boom Length	12.1 Ft.	12.2 - 19.5 Ft.	19.6 - 26.7 Ft.	26.8 - 33.8 Ft.	33.9 - 41.0 Ft.
Radius (Ft.)	Load (Lbs.)	Load (Lbs.)	Load (Lbs.)	Load (Lbs.)	Load (Lbs.)
≤ 8.0	6,560	6,560			
8.5	6,280	6,280	5,000		
10.0	5,160	5,160	4,590		
11.5		4,370	3,690		
13.0		3,810	3,200	2,380	
14.5		3,350	2,830	2,200	1,740
17.0		2,830	2,340	1,890	1,370
18.0		2,640	2,180	1,790	1,270
20.0			1,890	1,670	1,120
23.0			1,600	1,470	940
25.5			1,390	1,300	850
29.0				1,120	760
32.5				970	680
36.0					610
39.5					570

WORKING RANGE



RATED TOTAL LOAD - MEDIUM Outriggers, 4 Part Line

Boom Length	12.1 Ft.	12.2 - 19.5 Ft.	19.6 - 26.7 Ft.	26.8 - 33.8 Ft.	33.9 - 41.0 Ft.
Radius (Ft.)	Load (Lbs.)	Load (Lbs.)	Load (Lbs.)	Load (Lbs.)	Load (Lbs.)
≤ 8.0	6,560	6,560			
8.5	6,260	6,260	5,000		
10.0	5,100	5,100	4,530		
11.5		4,310	3,690		
13.0		3,750	3,160	2,330	
14.5		3,140	2,790	2,120	1,710
17.0		2,360	2,250	1,840	1,350
18.0		2,160	2,100	1,760	1,240
20.0			1,700	1,630	1,070
23.0			1,340	1,380	900
25.5			1,150	1,140	810
29.0				920	710
32.5				780	640
36.0					570
39.5					550

Reach Below Grade

Four Part	53' max.
Two Part	105' max.
One Part	211' max.

The Rated Total Load is based on the actual working radius including boom deflection. Due to wire rope strength and other limitations, when using two part or single part hooks use the appropriate four part Rated Total Load Chart but with maximum load of:

Two Part - 3,260 lb. Single Part - 1,650 lb.

The Rated Total Load Chart is supplied for reference only. Operator and all personnel must refer to the actual crane Rated Total Load Chart to determine allowable machine lifting and operating procedures. We are constantly improving our products and reserve the right to change design and specifications at any time.

ASME B 30.5 2004. ISO 9001 compliant



MAEDA MINI-CRAWLER CRANES Features & Options



Moment Limiter Digital Load System
Standard - All Models



Remote Control
Standard -
All MC Models

Radio Wireless
Optional



Electric Motor Power
Optional - All MC Models



LPG Motor Power
Optional - MC285-2



White Non-Marking Rubber Tracks
Optional - All MC and LC Models



**3 Sheave
Block Hook**
Standard - All Models

**Auxiliary
Boom Tip
Searcher Hook**
Optional
All MC Models

1,870 lb. (850kg)
Max. Capacity

Pins at 3
offset angles



Fly Jib
Optional
MC405 & LC785



Overhaul Ball
Optional
All Models



Auxiliary Winch with Long Rope

Optional - MC285-2

354 ft. (108m) Rope Length, 1,980 lb. (900kg)

Max. Capacity, 328 ft. (100m) Drop Below Grade



Man Basket

Optional - All MC Models

300 lb. (136kg) Payload Capacity



Oktopus Remote Control Glass Lifter

Optional - All MC Models

1,322 lb. (600kg) Max. Capacity

Additional Items Available: Exhaust Scrubbers, Wireless Remote,
Custom Paint, Custom Trailers, Outrigger Mats, Covers

Maeda USA

Tel: (713) 715-1500

Email: cranes@maedausa.com

www.maedausa.com



**USA - CANADA
LATIN AMERICA**